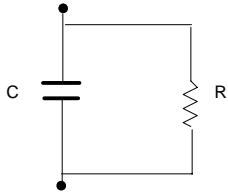
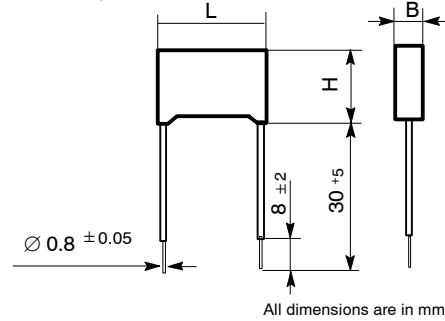


Typical applications: interference suppression and «across-the-line» applications. Suitable for use in situations where failure of the capacitor would not lead to danger of electric shock.

Electrical scheme



Insulated rigid leads



GENERAL TECHNICAL DATA

Capacitor characteristics:

- Dielectric: polypropylene film.
- Plates: metal layer deposited by evaporation under vacuum.
- Winding: non-inductive type.

Protection: plastic case, polyurethane resin filled. Box material is solvent resistant and flame retardant according to UL94 V0.

Marking : Manufacturer's logo, series, capacitance, tolerance, manufacturing date code, approvals, manufacturing plant.

Climatic category: 40/110/56 IEC 60068-1

Operating temperature range: -40 to +110°C

Related documents: IEC 60384-14 2nd edition '93; EN 132400.

ELECTRICAL CHARACTERISTICS

Rated voltage (V_R): 275Vac; 50/60Hz

Test voltage between terminations (on all pieces): 1700Vdc for 1 s at +25°C ± 5°C

AVAILABLE MODELS

(All dimensions are in mm)

C + R (Rated values)	275 Vac				Part Number
	B	H	L	p	
0.33µF + 1MΩ (1/2W)	8.5	17.0	26.5	22.5	R46KN3330ZA01M

APPROVALS

	ENEC-IMQ IEC 60384-14	Class X2	File No.V4413
--	--------------------------	----------	---------------

ENEC mark has replaced all the following European National marks:

